



ST HILDA'S
CE HIGH SCHOOL

Year 8
Guided
Options
2019

ST HILDA'S

Guided Options 2019

The KS4 Curriculum

This booklet is designed to provide you with information about the core curriculum (the subjects you have to take) and to help you make your option choices.

It is important that you take time to think everything through very carefully. You will be supported through this process by a sequence of events that are designed to help you make the best possible decisions for you as an individual.

Key Dates

Wednesday 6th March: Options Guidance Assembly

Thursday 7th March: Options Evening 6-8.30pm

Thursday 14th March: Year 8 Parents Evening 3.30-6.30pm

Thursday 14th or Tuesday 19th March: UCAS session with College tutors and SLT in PSHE

Friday 22nd March: Taster Day

Monday 25th March: Deadline for handing in option choice forms.

Monday 1st April: Guidance interview with a member of Senior Leadership Team to discuss your option choices.

Qualifications at KS4

GCSEs are courses that rely on formal qualifications at the end of Key Stage 4. Some may also contain classwork that is completed in exam-like conditions called controlled assessment.

BTECs and Cambridge National Certificates are the equivalent level to GCSE and they are assessed by a combination of controlled assessment and, to a lesser extent, examinations. They are ideal if you are hardworking and would like to balance the number of exams you take at the end of Year 11 with work completed over Key Stage 4.

What else should I consider when making my option choices?

The **English Baccalaureate** is a performance measure introduced by the government to promote breadth of academic study. It is designed to ensure that students are prepared for a university education. To achieve the EBacc, students must attain pass grades in English, maths, science (2 qualifications), a Modern Foreign Language and either History or Geography. You are advised to include History or Geography and one Modern Foreign Language in your choices to put you in the best possible position for progression from St Hilda's College into work or to university.

However, the mix of the EBacc subject may not be suitable for all students depending on their career aspirations. We will discuss pathways and subjects in great detail with you at the one-to-one guidance interviews.

Changes to GCSEs

GCSEs will be graded on the new scale from 9 (highest grade) to 1 (lowest grade) from 2018.

New Scale	Approximate equivalent grades
9	A* plus
8	A*
7	A
6	B plus
5 STRONG PASS	C plus/B minus
4 STANDARD PASS	C
3	D
2	E
1	F/G

Grade 4 is the benchmark for you to progress most to further education courses and careers.

St Hilda's College

The majority of our students successfully progress on to St Hilda's College, provided they meet the entry requirement of 5 GCSEs at Grade 4 or above. Last year our College students had a 100% pass rate at A Level and BTEC, with most students progressing on to their first choice of university.

Some subjects will have a higher entry requirement and it is important that students work hard from the start of their courses to ensure they achieve their potential in all of their subjects.

For further information, please visit our new website at www.sthildacollege.co.uk

KS4 GUIDED OPTIONS 2019



Name _____ Form _____

In addition to the core subjects you must select from the following by ticking the boxes:

1. Choose one of these subjects:

French	
German	
Spanish	
Geography	
History	
Computing	

2. Choose two from the following (Indicate choice 1 or 2):

Art & Design	
Business	
Computer Science	
Creative iMedia	
Design and Technology	
Drama	
French	
Geography	
German	
Health and Social Care	
History	
Hospitality and Catering	
Music	
PE	
Psychology	
Sociology	
Spanish	

Please note:
 If you want to qualify for the **English Baccalaureate** you need to ensure you pick from both boxes
 History or Geography
AND
 French or German or Spanish

Reserve Choices:
 Please choose **two** reserve subjects from **Option box 2:**
1st Choice:

2nd Choice:

Possible career plans:

Student Signature:

Form Tutor signature: _____ Parent/Carer signature: _____

HAND TO YOUR FORM TUTOR BY Monday 25th March 2019

How do I choose?

Try to choose subjects

- that you think you will **enjoy** and feel you are good at
- that you may **need** for future education and/or your career
- that you are most likely to work enthusiastically in and **succeed at**
- that provide a **balance and variety**. By keeping a balance at this stage, you will not restrict future options.
- talk to parent(s)/carer(s), subject teachers, careers staff and students who are in year 9-11 and are studying the particular subject.
- **DO** read the subject details in this booklet carefully and ask if you need to know more.
- **DO** opt for a balanced choice of subjects to keep future careers and study options open.
- **DO** be realistic about your ability – do not choose subjects you may find too hard or too easy.
- **DON'T** choose a subject just because you like a particular teacher (or avoid a subject because you dislike a teacher) - it is likely you will have a different teacher next year.
- **DON'T** choose a subject just because your friends are choosing it. You are deciding about your future and your friends may not be in the same group as you.
- **DON'T** be misled by the title of a subject into thinking you need it for a career

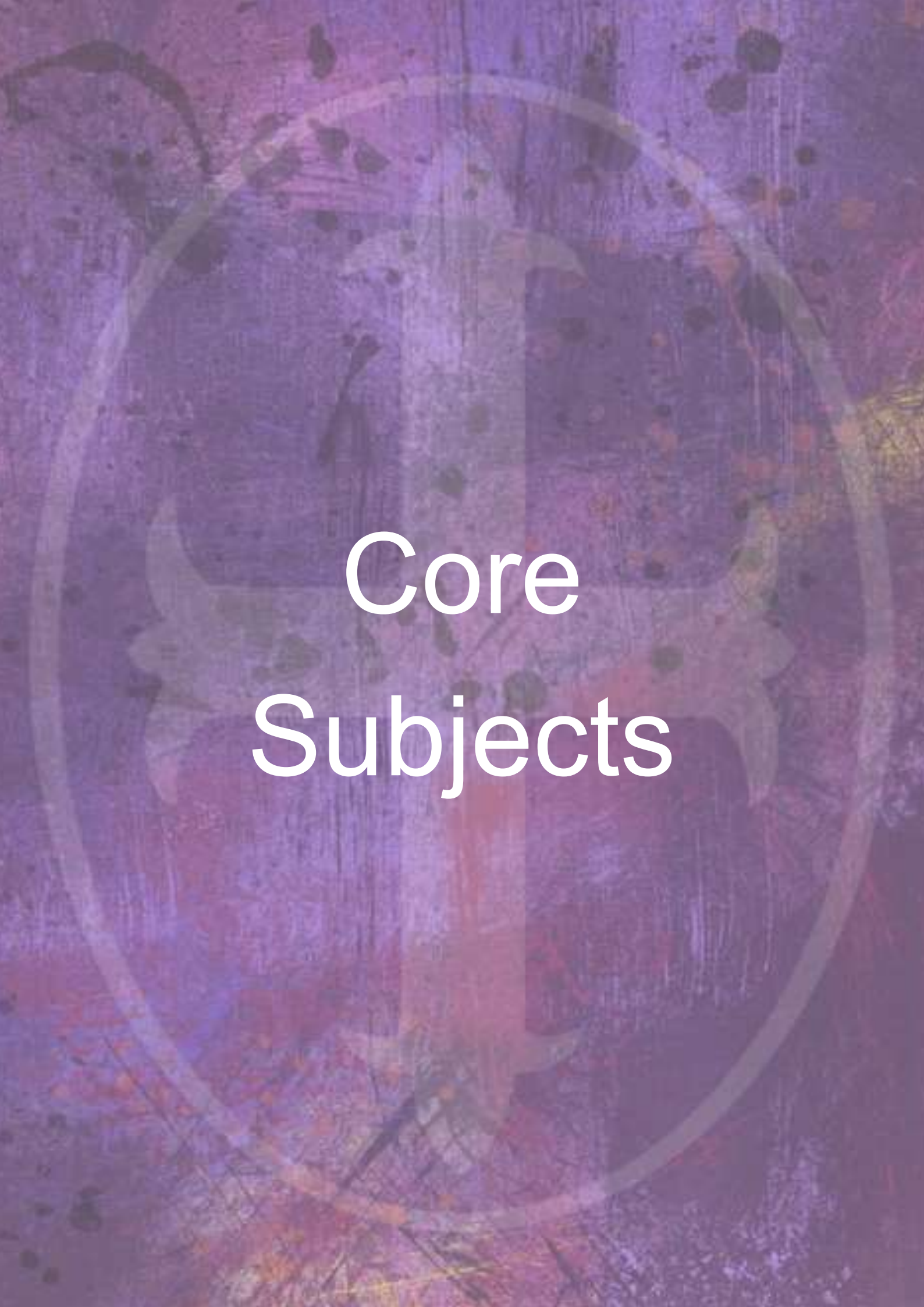
Useful Websites

<http://www.ucas.ac.uk/> - what courses are you interested in at University? What GCSE grades and which subjects do you need?

<http://www.russellgroup.ac.uk/> - The Russell Group represents 24 leading UK universities, read their FAQ to find about the requirements for GCSE Modern Foreign Language

<http://www.apprenticeships.org.uk/> - what are apprenticeships?

<http://www.careersbox.co.uk/index.php> - find out more about your chosen career



Core Subjects

PSHE

PSHE at St Hilda's covers three different subjects. These subjects are Citizenship, PSHE and Careers (IAG).

All three are statutory subjects.

The PSHE programme of study for year 8 and 9 is designed to help the students to develop a robust set of skills and attributes that will enable them to confidently face life's challenges and opportunities, now and in a fast-changing future. The programme of study will enable students to develop

Interpersonal and Social Effectiveness

Character Education

Self-awareness

Values including Fundamental British Values

Parliamentary understanding and the work of the courts and law system

Resilience

Effectiveness within the wider community

Risk Management

Financial Capability

Learning about careers and the world of work

Developing through careers, employability and enterprise education

What is studied?

Theme	Year 8	Year 9
Health and Well being	Body Image Fundamental British Values	Resilience and reframing failure Expect Respect Hate crimes
Relationship and Diversity	Drugs Education Financial Capability Exploited CEOP Relationship and Sex Education	Drugs Education Financial Capability Relationship and Sex Education
Living in the Wider World	Communities and Identities Career Education (IAG)	Career Education (IAG) Equality, Diversity and the law in the UK Democratic Government. Parliament, Monarch – roles of Citizens

GCSE English Language



What will I study?

GCSE English language assess students on high-quality, challenging texts from the 19th, 20th and 21st centuries. You will study a range of non-fiction and fiction texts to explore how writers have used language to communicate their purpose, as well as formulating your own opinions on the writers' ideas. You will also write creatively, producing short stories, and writing non-fiction pieces such as speeches, articles and letters. In year 9, you will get to launch your own campaign, using language to influence others' thoughts and emotions.

How will I be assessed?

This is a linear course, assessed with two exams in year 11, worth 100%.

- **Component 1:** 20th Century Literature Reading and Creative Prose Writing; 1h 45 minutes written exam; 40% of qualification
- **Component 2:** 19th and 21st Century Non-fiction Reading and Transactional/Persuasive Writing; 2 hour written exam; 60% of qualification
- **Component 3:** an individual speech (unweighted)

How can I progress ?

The writing skills you'll develop through this course will serve you not only in further education but also throughout your adults lives. The subject is a great springboard

into Media, Law, English Language and Theatre Studies A-levels.



ST HILDA'S
CE HIGH SCHOOL

St Hilda's
Extra
Snippet

Developing skills in English Language will help you to become an informed citizen who can formulate your own ideas about the world around you.

GCSE English Literature



What will I study?

During this course, you will study a wide range of texts, formulating personal and evaluative ideas about a range of characters. You'll study how the writer has shaped your response as you explore an Inspector solving a crime, an old miser learning how to be good, what it feels like to be a hawk, the horrors of WW1 and much more!

You will study:

- A Shakespeare text (usually Romeo and Juliet or Othello)
- Post-1914 Prose/Drama (usually An Inspector Calls)
- Poetry from 1789 to the present day— your teacher will give you an anthology of 18 poems from the exam board
- 19th Century Prose (usually A Christmas Carol)
- Unseen Poetry from the 20th/21st Century

How will I be assessed?

This is a linear course, assessed with an exam in year 11, worth 100%. There is no coursework.

Component 1: Shakespeare and Poetry

Written examination: 2 hours; 40% of qualification

Component 2: Post-1914 Prose/Drama, 19th Century Prose and Unseen Poetry

Written examination: 2 hours and 30 minutes 60% of qualification

How can I progress ?

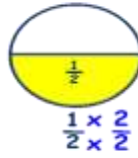
The subject is great preparation for Media, Sociology, Theatre Studies, Psychology and Law at A-level.



St
Hilda's
Extra

GCSE English Literature will teach you to empathise with people, understand their motivations and evaluate the consequences of their actions.

GCSE Mathematics



$$y_{10} = A + Bx_{10} + Cx_{10}^2 + Dx_{10}^3$$

$$3y = A + Bx_0 + Cx_0^2 + Dx_0^3$$

$$y_{10}^2 = B + 2Cx_{10} + 3Dx_{10}^2$$

$$3y^2 = B + 2Cx_0 + 3Dx_0^2$$

$$y_{10}^{10} = 2C + 6Dx_{10}$$

$$3y^{10} = 2C + 6Dx_0$$

What will I study?

GCSE Mathematics is divided into six main domains: Number; Algebra; Ratio, Proportion and rates of change; Geometry and measures; Probability and Statistics.

Alongside developing their knowledge of the curriculum content students also continue to develop their confidence, understanding and a broad range of mathematical skills. Students are encouraged to think and communicate mathematically, in clearly written, spoken and graphical forms. Problem solving skills are developed to enable students to apply their mathematical knowledge and ability in a wide variety of situations across all subjects.

Students will develop an appreciation of the interdependence of the different branches of mathematics, and of its place and use in society. At GCSE we aim to build a firm foundation from which to study mathematics further.

How will I be assessed?

All six curriculum areas are assessed via three external examinations at the end of year 11. There is no coursework element to the course therefore these exams make up 100% of the assessment. Paper 1 is a non-calculator assessment whereas a calculator is allowed for Papers 2 and 3. All papers are 90 minutes in duration and contribute equally to the overall grade. There are two tiers available: Foundation Tier, with grades 1-5 available; and Higher Tier, with grades 4-9 available. Students sit all three exams at the same tier.

How can I progress ?

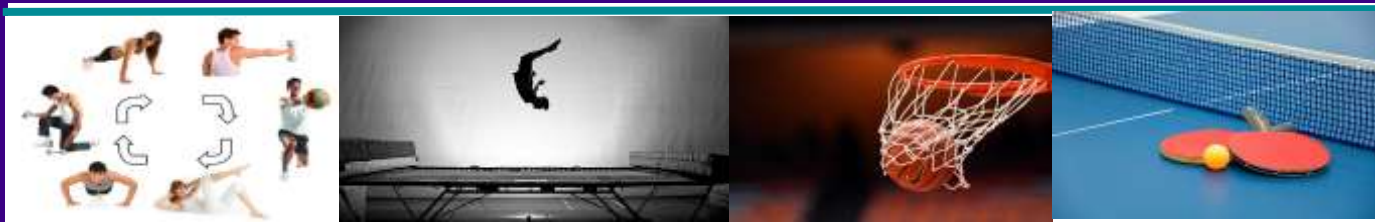
From GCSE Maths you can progress on to A Levels in Maths and Further Maths. You will also use your Maths skills in other qualifications, for example Sciences, Business and Psychology.



St Hilda's
Extra
Snippet

GCSE Maths is required for most careers and courses.

Core PE



What will I study?

The PE department aim to offer a wide range of physical activities and sports across the academic year. Although we continue to offer a breadth of sports and activities covered in Key Stage 3, we add opportunities for students to learn new key skills.

Activities that your son/daughter will have the opportunity to participate are separated into three categories; invasion games, net/wall games and fitness.

Here is a list of the activities on offer:

Football	Basketball	Netball	Hockey
Rounders	Rugby (Tag)	Trampolining	Health and Fitness
Badminton	Dodgeball	Handball	Volleyball
Athletics	Softball	Cricket	

We make use of all the sports facilities we have, and the activity on offer depends on which space each lesson will be in. Classes rotate each half term around the facilities and this allows us to provide the widest possible range of activities to every class.

How will I be assessed?

You will be assessed as a performer, coach or an official. Alongside your practical performance in these roles we massively take into consideration your attitude to learning, teamwork and communi-

How can I progress?

You can use the skills that you have been developing in KS3 and transfer them to new or unfamiliar sports. You will also improve and develop more advanced skills in those activities in which you have more experience in order to develop a higher standard of performance. You can progress further by taking part in any of the numerous extra-curricular activities offered by the Physical Education Department.

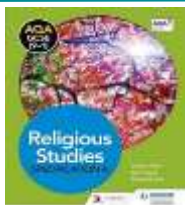
St Hil-
da's
Extra



ST HILDA'S
CE HIGH SCHOOL

FOR MORE INFORMATION PLEASE SEE A PE TEACHER!

GCSE Religious Studies AQA A (Full Course)



What will I study?

The course is comprised of eight units split into two distinct sections.

Section 1 – A study of religious beliefs, teachings and practices.

- Christianity – Beliefs & teachings
- Christianity – Practices
- Islam – Beliefs & teachings
- Islam- Practices

Section 2 – A thematic study of ethical and philosophical issues.

- Religion, crime & punishment
- Religion, peace & conflict
- Religion & life
- Religion, human rights and social justice

How will I be assessed?

2 x 1 hour 45 minute written examinations at the end of year 11.

There is no coursework.

How can I progress?

Religious Studies is the fastest growing subject in schools and universities. The knowledge and critical thinking skills gained in this demanding curriculum area are of value in many different fields and looked on favourably by universities and employers. Many students go onto study A Level Philosophy & Ethics and some continue their study onto degree level.

Typical employers include:

- National and local government,
- Schools, colleges and universities
- Charities, voluntary and not-for-profit organisations;
- Social services and other caring professions;
- The church and other religious organisations;
- Financial and legal firms;
- National Health Service;
- PR, advertising, sales and marketing companies;
- Libraries, charities, museums, television companies and publishing houses.

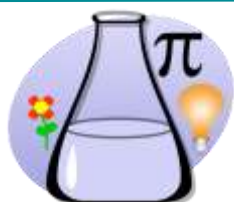
St Hilda's
Extra
Snippet



ST HILDA'S
CE HIGH SCHOOL

Please speak to Mrs Sunderland for more information

GCSE SCIENCES



What will I study?

We follow the AQA specification where all students will study Biology, Chemistry and Physics with three specialist teachers. Some students will gain three qualifications in Biology, Chemistry and Physics and some will gain two qualifications in Trilogy Combined Science. The most suitable course will be decided for each student at the end of year 10.

Biology :Key ideas	Chemistry : Key ideas	Physics : Key ideas
Cell biology	Atomic structure and the periodic table	Forces
Organisation	Bonding and the structure of matter	Energy
Infection and response	Quantitative chemistry	Waves
Biogenetics	Chemical and energy changes	Electricity
Homeostasis and response	Organic chemistry	Magnetism and electromagnetism
Inheritance, variation and evolution	Chemical analysis & Using resources	Particle model of matter & space physics
Ecology	Chemistry of the atmosphere	Atomic structure

How will I be assessed?

There is no longer a controlled assessment element; this has been replaced with a set of key practicals that students must carry out over the course. There will be questions on these practicals on the exam papers. There will be 6 exam papers, 2 in each subject. In Separates Sciences each paper will last 1 hour and 45 mins and will have 100 marks. In Trilogy there are 6 papers lasting 1 hour 15 minutes with marks out of 70. There is the option of either foundation or higher tier. Each of the separate science qualifications will be graded 9-1. Trilogy will have a 17 point grading scale from 9-9, 9-8 through to 2-1, 1-1.


How can I progress ? We offer a selection of courses at KS5: Biology, Chemistry, Physics, Health and Social Care BTEC, Applied Science BTEC



ST HILDA'S
CE HIGH SCHOOL

Qualifications in Science open the door to a wide range of careers

St Hilda's
Extra
Snippet



Option Subjects

GCSE Art and Design



Why choose this course?

If you enjoy your Art and Design lessons and want to develop and improve your skills. GCSE Art and Design will also start you on the pathway towards a job in the creative industries which are now worth £71.4 billion per year to the UK economy.

What will I study?

You will explore a wide variety of creative skills including photography, drawing, painting, printmaking, textiles, sculpture, digital image manipulation and more. Gallery trips and research tasks will give you the opportunity to study the work of artists, designers and cultures. Researching their techniques and experiences will help inspire your own work and develop your contextual understanding and skills of critical analysis. You will develop your skills in visual communication by exploring and expressing your own ideas and opinions using a range of techniques and materials. You will reflect on your own work and progress. We will be support you to build your confidence in working independently to create innovative artwork.

How will I be assessed?

GCSE Art and Design is 60% coursework. Your work during lesson time and homework tasks will create a portfolio that will be assessed on:

- ⇒ Contextual Understanding
- ⇒ Creative Making
- ⇒ Reflective recording
- ⇒ Personal presentation



The Externally Set Assignment involves a 12 week project followed by a 10 hour exam set over a number of days. During the exam you will independently create a piece of work for your chosen project.

How can I progress?

GCSE Art and Design prepares you for A Level Art and Design and A Level Photography.

St Hilda's
Extra
Snippet

Art and Design “enables students to think creatively and critically, to solve problems and to make a difference for the better. It gives them the opportunity to become creative, innovative, enterprising and capable of leadership to equip them for their future lives as workers and citizens.” (nfer.ac.uk)

ASDAN



Mrs Lyon (SENCO) will contact parents and carers of student for whom this may be a suitable option.

There are two courses that form this programme:

Personal and Social Development

This qualification offers imaginative ways of supporting young people in:

- Becoming confident individuals who are physically, emotionally and socially healthy
- Being responsible citizens who make a positive contribution to society and embrace change
- Managing risk together with their own wellbeing

Employability

- This qualification provides a framework for developing and recognising general employability skills.
- ASDAN was given full endorsement for the Employability qualifications by Asset Skills, the Sector Skills Council which had responsibility for Employability skills and qualifications.
- ASDAN featured in a report commissioned by the Department for Business,

How will I be assessed?

Learners complete units of study which are internally assessed and then externally moderated.

Literacy skills

High level literacy skills are essential for success in GCSE courses. This programme will support students to achieve their potential in all of their GCSE subjects

St Hilda's
Extra
Snippet



ST HILDA'S
CE HIGH SCHOOL

This course is by invitation only

GCSE Business



Why choose this subject?

GCSE Business will show students how business activities affect everyday life. Students will discover that business influences most decisions that are made in society. This subject is relevant for the students and will enhance their understanding of politics, economics and the business world.

What will I study?

The OCR GCSE in Business allows students to investigate the following areas:

- The role of business enterprise and entrepreneurship
- Marketing
- Human Resources
- Finance
- The economic climate

How will I be assessed?

There will be two examinations at the end of the course:

Paper One Business activity, marketing and people - 1 hour 30 minutes

Paper Two Operations, finance and influence on business - 1 hour 30 minutes

How can I progress ?

The course is perfect preparation for A levels and a wide variety of jobs. Students will be able to continue their studies in the sixth form.



ST HILDA'S
CE HIGH SCHOOL

St Hilda's
Extra
Snippet

You are influenced by business every single second of the day.

GCSE Computer Science



Why choose this course?

GCSE Computer Science will help you develop an understanding of computer science methods in the real world and as a result be able to design, build and test a fully-programmed solution to a problem. You will develop knowledge and understanding of how technology can be used proactively to help with current issues that impact on modern society.

What will I study?

- 1: Principles of Computer Science
- 2: Application of Computational Thinking
3. Programming Project

How will I be assessed?

Units 1 (1 hour 40 minutes) and 2 (2 hours) are assessed via a written examination whereas unit 3 is a coursework unit conducted over 20 hours. Units 1 and 2 makeup 40% each of the marks thus leaving 20% for the programming project.

How can I progress?

GCSE Computer Science is the ideal preparation for A level Computer Science or BTEC Level 3 Extended Certificate in Information Technology.



St Hilda's
Extra
Snippet

Will.i.am has said that “coding is the new rock and roll”. So pick GCSE Computer Science and get into coding!

Creative iMedia CNC (Level 2)



Why choose this course?

Creative iMedia will give you the skills to explore the latest developments in digital media.

What will I study?

The Cambridge National Certificate in Creative iMedia is media sector focused (film, television, web development and gaming) and has IT at its heart.

You will cover four units of study:

R081: Pre-production skills

R082: Creating digital graphics

R085: Creating a multipage website

R091: Designing a game concept

How will I be assessed?

Unit R081 Pre-production skills is assessed via a written examination which you will take in the January of Year 10.

The other units are coursework units. They are completed throughout the remaining eighteen months of the course.

How can I progress ?

The Creative iMedia course is the perfect preparation for study on the BTEC Level 3 Extended Certificate in IT course at St. Hilda's College.

The BTEC in IT has the same number of UCAS points as an A level qualification and is accepted by all UK universities.



ST HILDA'S
CE HIGH SCHOOL

St Hilda's
Extra
Snippet

Do you want to work in the exciting world of digital content? If so, this is the course for you!

GCSE Design & Technology



Why choose this subject?

If you are creative and enjoy problem solving, GCSE D&T is the course for you. D&T provides a balance of both academic and practical study, and is recognised worldwide as a qualification of value. Recent figures showed that 75% of engineers working for the James Dyson Company studied D&T at GCSE level; proof that this subject provides solid foundations to take into the world of work!

What will I study?

Students will learn how the design process works, about the properties of different materials and how to apply them to real life situations. Students will have access to the latest in technology, with the newly equipped workshop including new machine tools as we as a laser cutter and 3D Printer. Students will be trained on the latest in 3D Modelling software, as used in industry.

How will I be assessed?

Students will complete two units, with each representing 50% of the overall grade. One is assessed by an end of course examination, and the other is non-exam assessed coursework.

Exam Unit:

What's assessed: Core technical principles
Specialist technical principles
Designing and making principles.

How it's assessed Written exam: 2 hours
100 marks
50% of GCSE

Non-exam assessment:

What's assessed: Practical application of:
Core technical principles
Specialist technical principles
Designing and making principles

How can I progress ?

Students of D&T often go on to have successful careers in all aspects of Engineering, Product Design, Graphic Design, Fashion Design, Digital and Traditional Marketing, to name but a few. Skills acquired in D&T are transferable to many different career paths.



GCSE Drama



Why choose this course?

GCSE Drama is a diverse and exciting course for students who can perform well across different disciplines (both practical and written). In addition, it offers the chance to complete a coursework style element that allows for redrafting and development. This provides students with the chance to engage in and develop work that is wholly their own, encouraging leadership and communication. Students who study Drama develop a strong affinity for the theatre and appreciation for the Arts sector overall.

What will I study?

The course for AQA Drama is both engaging and challenging. Students will study, and develop and clear understanding of, the Arts Sector. We regularly visit the theatre, and are in our fourth year of the ongoing partnership with Everyman Playhouse. Students who study Drama will also be viable to join the annual London trip. We explore approaches to Drama in both scripted and devised performances including the influence of various practitioners on performance. There are also options for students who prefer to pursue stagecraft - light, sound, costume or stage design.

How will I be assessed?

Component 1: Understanding Drama - Written Examination (40%)

Exploring and analysing both the creation of live theatre in performance and the renowned play *The Crucible* by Arthur Miller.

Component 2: Devising Drama - Practical Performance with Devising Log (40%)

Development of an original piece of drama based on an initial stimulus with an accompanying log explaining your process and decisions.

Component 3: Texts in Practice - Practical Examination (20%)

Performance of two extracts from a contemporary scripted play.

How can I progress ?

Drama is an excellent gateway to a range of A Level subjects, offering opportunities for self-discipline and an appreciation of working to deadlines alongside rigorous academic understanding. St. Hilda's also offers A Level Drama and Theatre Studies for those hoping to continue their studies in the Arts Sector.

St Hilda's
Extra
Snippet



In the UK, the creative industries contribute almost £90bn to the economy and account for one in every 11 jobs.

GCSE French



What will I study?

1: Identity and culture

Me, my family and friends, Technology in everyday life, Free-time activities, Customs and festivals in German-speaking countries/communities

2: Local, national, international and global areas of interest

Home, town, neighbourhood and region, Social issues, Global issues, Travel and tourism

3: Current and future study and employment

My studies, Life at school/college, Education post-16, Jobs, career choices and ambitions

How will I be assessed?

You are either entered for Foundation (Grades 1 - 5) or Higher (Grades 4 - 9).

Within each tier of examination, there are final examinations in each of the following skills:

1. Listening
2. Reading
3. Speaking
4. Writing

How can I progress ?

Typical careers with French include management; travel and hospitality, media, advertising, PR, publishing; marketing; translation; teaching; business and finance; civil service and diplomacy; European Law.



ST HILDA'S
CE HIGH SCHOOL

C'est
facile!

Choisis le français!

GCSE Geography



Why choose this course?

GCSE Geography will show students how every aspect of the world is interconnected and how everything affects everything else. It is a subject of Knowledge, Skills and Understanding, which prepares students for the world of work, developing a sense of the 'bigger picture'. The broad range of study provides something for everyone, including great residential fieldwork opportunities.

What will I study?

- Global Hazards (Hurricanes, Drought, Earthquakes, Volcanoes)
- UK in the 21st Century
- Climate Change
- Urban Futures
- Landscapes—Coasts and Rivers
- Ecosystems—Tropical Rainforests and Polar Regions
- Dynamic Development
- Resources—Food, Energy and Health

How will I be assessed?

Paper 1—Our Natural world (Physical Geography) 1h15

Paper 2— People and Society (Human Geography) 1h15

Paper 3—Geographical Exploration (Synoptic paper, including Fieldwork and Skills) 1h30

How can I progress ?

The course is perfect preparation for A levels and a wide variety of jobs. Students will be able to continue their studies in St Hilda's College.



St Hilda's
Extra
Snippet

The world is your only home. Don't you think you should know how it works?

GCSE German



What will I study?

- 1: Identity and culture (Me, my family and friends, Technology in everyday life, Free-time activities, Customs and festivals in German-speaking countries/communities)
- 2: Local, national, international and global areas of interest (Home, town, neighbourhood and region, Social issues, Global issues, Travel and tourism)
- 3: Current and future study and employment (My studies, Life at school/college, Education post-16, Jobs, career choices and ambitions)

How will I be assessed?

You are either entered for Foundation (Grades 1 - 5) or Higher (Grades 4 - 9).

Within each tier of examination, there are final examinations in each of the following skills:

1. Listening
2. Reading
3. Speaking
4. Writing

How can I progress ?

Typical careers with German include management; travel and hospitality, media, advertising, PR, publishing; marketing; translation; teaching; business and finance.



ST HILDA'S
CE HIGH SCHOOL

Deutsch ist
super!

Machen Sie mit!

GCSE History



Why choose this course?

“Make the lie big, make it simple, keep saying it and eventually they will believe it.” Adolf Hitler. Why were so many people willing to listen to Hitler? GCSE History helps you to ask and evaluate important questions. History helps you to think critically about the world, analyse information and construct an argument. It encourages you to debate and express your opinions in a structured way. This is an invaluable skill both for work and study at university.

What will I study?

You will study four different units:

1. Medicine in Britain, c1250—present AND The Western Front 1914—1918
2. a. Anglo-Saxon and Norman England, c1060—1088
2. b. The Cold War, 1941—91
3. Weimar and Nazi Germany, 1918—39

How will I be assessed?

Each unit will be assessed in the form of a written exam.

1. Medicine is worth 30% of your final mark—This paper will consist of source questions and knowledge questions including a 16 mark essay.
2. Anglo-Saxon & Norman England and The Cold War are worth 40% of your final mark.
3. Weimar and Nazi Germany make up the final 30% - The paper will have questions on interpretation .

How can I progress?

You will develop all the skills taught at KS3. You will be able to turn your PEE paragraphs into PEEJ! J means judgement. You will be expected to judge the importance of factors / events in helping change come about. Many GCSE students study History at A Level and go on to university to study History, Archaeology, Law, Journalism and Business.

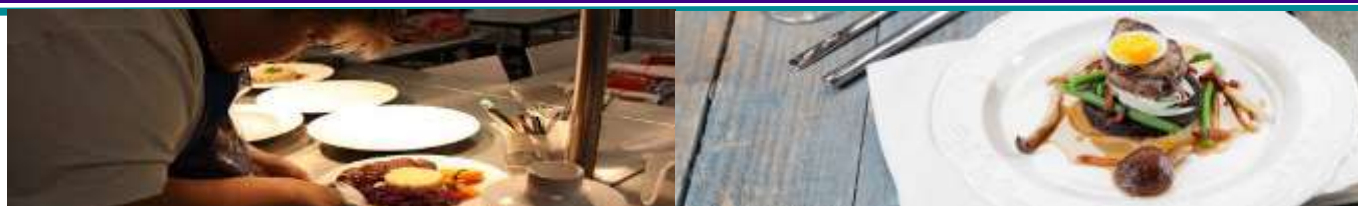


ST HILDA'S
CE HIGH SCHOOL

INTERESTING FACT—The most important job in Henry VIII's court was groom of the stool! Helping Henry go to the toilet gave you power and influence!!

St Hilda's
Extra
Snippet

Vocational Award Level 2 Hospitality and Catering



Why choose this subject?

If you are creative and enjoy the practical aspects of cooking, Hospitality and Catering is the course for you. Hospitality and Catering provides a balance of the theoretical understanding of the Hospitality Industry as well as the practical cooking skills necessary for professional life in a kitchen!

What will I study?

The course is composed of two units:

Unit 1: The Hospitality and Catering Industry (Exam assessed, representing 40% of grade)

Unit 2: Hospitality and Catering in Action (Non-exam assessed, representing 60% of grade)

Topics include the environment in which hospitality and catering providers operate, how hospitality and catering provisions operate, how hospitality and catering provision meets health and safety requirements, how food can cause ill health and will be able to propose a hospitality and catering provision to meet specific requirements.

How will I be assessed?

Unit 1: The Hospitality and Catering Industry (Exam assessed, representing 40% of grade)

Unit 2: Hospitality and Catering in Action (Non-exam assessed, representing 60% of grade)

How can I progress ?

This provides routes into industry and onto further study both at University and apprenticeships at all levels. It is highly rated as it provides students with high level practical cooking skills in real life contexts.



ST HILDA'S
CE HIGH SCHOOL

**Please speak to Ms Button for more information about this exciting course
or any of our pupils in year 9 or 10**

BTEC Level 2 Tech Award in Health and Social Care



Why choose this subject?

BTEC Level 1/2 Tech Award in Health and Social Care aims to provide an overview of the sector.

It is for learners who are interested in learning about the health and social care, as part of a balanced study programme.

What will I study?

Component	Component title	How assessed	% grade overall
1	Human Lifespan Development	Internal	30%
2	Health and Social Care Services and Values	Internal	30%
3	Health and Wellbeing	Synoptic External	40%

How will I be assessed?

Components 1 and 2 are assessed through internal assessment. Internal assessment for these components has been designed to relate to achievement of application of the conceptual underpinning for the sector through realistic tasks and activities. This style of assessment promotes deep learning through ensuring the connection between knowledge and practice.

There is one external assessment, Component 3, which provides the main synoptic assessment for the qualification. Component 3 builds directly on Components 1 and 2 and enables learning to be brought together

How can I progress ?

You can study BTEC Level 3 Health and Social Care, which prepares learners to enter employment or an apprenticeships, or to move on to higher education by studying a degree in aspects of health or social care.



ST HILDA'S
CE HIGH SCHOOL

The course offers students the opportunity to follow a vocational type course in the Health and Social Care sector.

St Hilda's
Extra
Snippet

GCSE Music



Why Choose this course?

This course is perfect for anyone who loves creating and listening to music. The majority of the course is practical, and allows you to develop your own skills and interests.

What will I study?

- **Performing**—You will work on your chosen instrument or voice, as an individual and in groups. You should aim to be working on grade 3/4 material **by year 11**.
- **Composing**—You will create two compositions. For the first composition you will have complete freedom to choose the style, and instruments used. For the second you will choose from a number of challenges the exam board give.
- **Appraising**—Learning to listen in detail to music, understanding how it has been put together. You will study pieces including ‘Defying Gravity’ from Wicked, ‘Queen’s Killer Queen’, and music from Star Wars along with the music of Bach and Beethoven.

How will I be assessed?

- **Performing**—worth 30% A solo performance and a group performance. These are recorded, internally marked and externally moderated.
- **Composing**—worth 30% Two compositions, at least 3 minutes in total. These are recorded and written up, and then internally marked and externally moderated .
- **Appraising**—worth 40% A listening exam at the end of the course.

How can I progress?

This course an excellent step towards a job in the UK’s £84 billion Creative Industries. It leads nicely to further study at A Level or BTEC. Music is well regarded by employers who know that musicians are creative, disciplined, and able to work well independently or in a group.

St Hilda’s is please d to offer A Level music to further your studies.

St Hilda’s
Extra
Snippet



ST HILDA'S
CE HIGH SCHOOL

Please speak to Mrs McCann for more information or any of our GCSE pupils in year 9/10/11

GCSE Psychology



Why choose this course?

Psychology is the study of both the mind and behaviour. It will help to improve and develop a range of skills from verbal communication to critical analysis within written work. It will teach you to recognise two sides of an argument, to form a discussion and to think outside of the box.

Will I enjoy it?

Within Psychology, we employ a variety of different activities, teaching styles and resources that cater for all of our students. We deliver a mixture of topic areas that students can relate to and are interested in, and we guide students into developing and expanding their own thoughts and ideas. You will need a good memory as there are a lot of facts to recall. In addition you will need to have good basic maths skills (10% of GCSE exam) and have good English skills to succeed at this subject

What will I study?

The topic areas that you may cover at GCSE level include:

- Topic 1: **Development** – How do you develop?
- Topic 2: **Memory** – How does your memory work?
- Topic 3: **Psychological problems** – How would psychological problems affect you?
- Topic 4: **The brain and neuropsychology** – How does your brain affect you?
- Topic 5: **Social influence** – How do others affect you?
- Topic 6: **Criminal psychology** — Why do people become criminals?
- Topic 7: **The self** — What makes you who you are?
- Topic 8: **Research methods** – How do you carry out psychological research?

How will I be assessed?

The course is **100% exam based** and the students will take 2 exams at the end of Year 11.

Paper 1 = 1hr 45mins **Paper 2** = 1hr 20 minutes

How can I progress ?

You can continue to study Psychology further at A Level and then at Degree Level.

Psychology is widely used today and can be found in almost all fields of education and employment. <http://www.bps.org.uk/careers-portal> (for info on specific Psychology careers).

St Hilda's
Extra
Snippet

“After doing psychology for half a century, my passion for all of it is greater than ever” - Zimbardo

GCSE Physical Education



Why choose this course?

GCSE Physical Education is a varied and engaging course that will be of interest to any students who enjoy any aspect of Physical Education in school or take part in sport outside of school. You will enjoy this course if you are interested in fitness, health or anatomy physiology. If you choose this course, you will enjoy the use of the fantastic sports facilities and have extra opportunities to use them. sports hall, dance studio, fitness room, astro-turf and hard court area alongside having a central place for all theory lessons in the PE classroom. You will have the opportunity to attend numerous trips and sports competitions as well as participating in outdoor adventure activities such as rock climbing. The PE department has an excellent record of results in GCSE PE.

What will I study?

In theory lessons you will study a wide variety of topics including sports psychology, anatomy physiology and health and fitness. In practical lessons, you will have the opportunity to develop your skills and try new sports. You can be assessed in school, in certain activities, or you may also be assessed in sports that we are unable to offer, as long as you are able to provide evidence of your participation in these activities.

How will I be assessed?

There are two examinations at the end of Year 11 designed to test your knowledge and understanding of the theory content. These examinations are worth 60% of the overall mark.

The practical assessment will require you to perform / play three different sports;

1 team sport, 1 individual sport and 1 other team or individual sport

It is highly recommended that you participate in one of these activities regularly in school and outside of school.

You will also complete one piece of written coursework in which you will analyse your performance in one of your activities and suggest how it could be improved with a training programme.

How can I progress ?

The qualification will be a useful stepping stone to a wide variety of A -Levels and BTEC Level 3 qualifications. In St Hilda's College, you could go on to study BTEC Sport Level 3. The course has strong links to careers in coaching, education, medicine, physiotherapy, fitness industry, sports journalism and sports psychology.

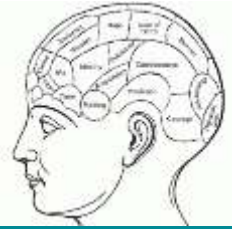


St Hilda's
Extra
Snippet

Please speak to one of the PE staff for more information...

Mr Lloyd, Mrs Gilbert, Miss Flavin, Mr Deane, Miss Dennis.

GCSE Sociology



Why choose this course?

GCSE Sociology aims to provide the student with an understanding of society and also how people's behaviour is affected by society. Students will draw on their own experiences when studying this subject. Sociology is a relevant and dynamic subject, students must have an interest in the world around them and be prepared to voice opinions.

What will I study?

The WJEC GCSE in Sociology allows students to investigate the following areas :

- Key Sociological concepts / sociological research methods
- Families
- Crime and deviance / youth disorder
- Education / social class

How will I be assessed?

There will be two examinations at the end of the course:

Paper one Understanding Social Processes - 1 hour 45 minutes

Paper two Understanding Social Structures - 1 hour 45 minutes

How can I progress ?

The course is perfect preparation for A levels and a wide variety of jobs. Students will be able to continue their studies in the sixth form.

St Hilda's
Extra
Snippet

Sociology is the subject for you if you want to know what is really going on in society today

GCSE Spanish



What will I study?

- 1: Identity and culture (Me, my family and friends, Technology in everyday life, Free-time activities, Customs and festivals in Spanish-speaking countries/communities)
- 2: Local, national, international and global areas of interest (Home, town, neighbourhood and region, Social issues, Global issues, Travel and tourism)
- 3: Current and future study and employment (My studies, Life at school/college, Education post-16, Jobs, career choices and ambitions)

How will I be assessed?

You are either entered for Foundation (Grades 1 - 5) or Higher (Grades 4 - 9).

Within each tier of examination, there are final examinations in each of the following skills:

1. Listening
2. Reading
3. Speaking
4. Writing

How can I progress ?

Typical careers with Spanish include management; travel and hospitality, media, advertising, PR, publishing; marketing; translation; teaching; business and finance.



ST HILDA'S
CE HIGH SCHOOL

¡Aprende
español!

¡Español es estupendo!