

# PASTORAL CARE

## The implementation of our provision

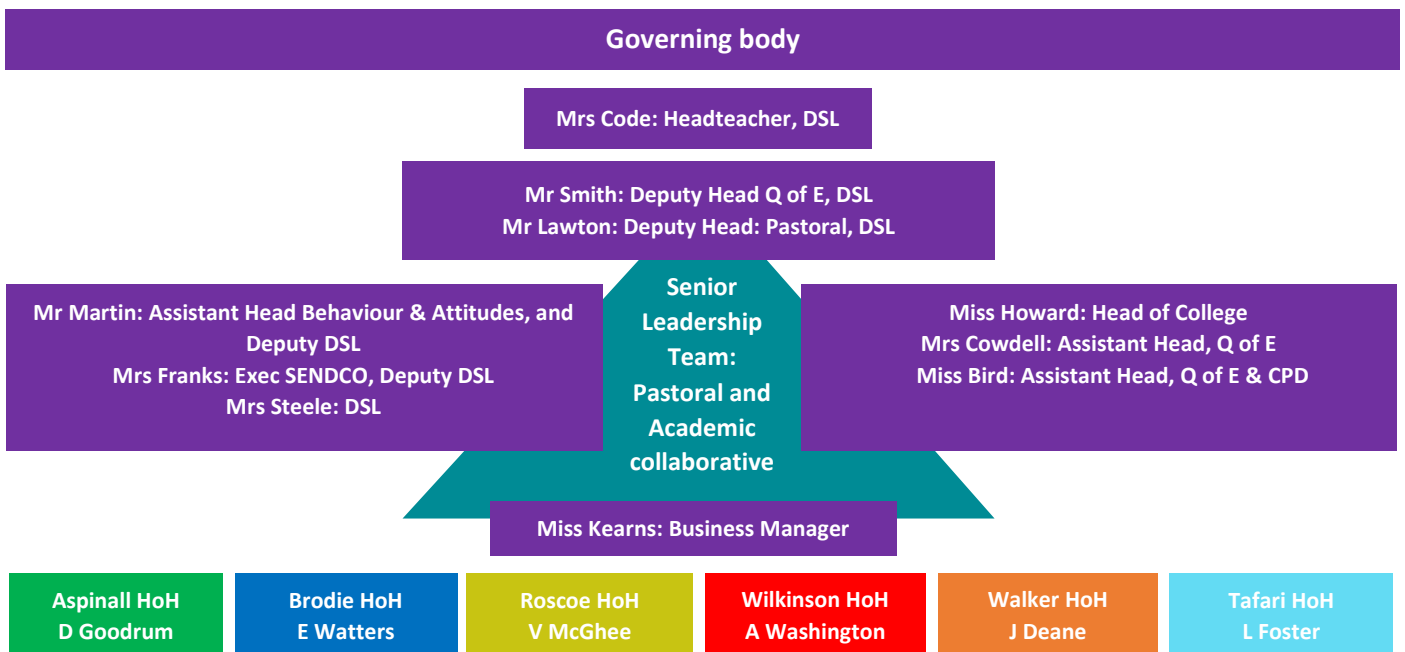


**ST HILDA'S**  
CE HIGH SCHOOL

Pastoral care is at the very heart of all that we do at St Hilda's. Our St Hilda's Family is very precious. It starts with the form tutor, the person who sees your child at the start of every school day. Relationships are built in the form time and your child's form tutors is the first port of call. Each form belongs to a House. We have created smaller families within the larger St Hilda's Family. Your child's Head of House (HoH) works closely with the form tutor to ensure your child is looked after and safe. All of our staff undergo annual safeguarding training and all understand that the well-being of our students is everybody's responsibility.

Our tiered and collaborative provision will ensure that the pastoral care of students is a priority and is supported to ensure underperformance is challenged. If there are any issues, we identify early and support is implemented quickly. We have many stages of well-being support in the school, and work closely with our valued outside agencies, such as CAMHS, to ensure all students are supported by the right people.

Our Governing Body takes its responsibility to safeguard all students very carefully. There are 2 link governors for safeguarding who meet regularly with the pastoral teams and report back to the full Governing Body. Safeguarding our students is their top priority.



Heads of House will pick up issues from form tutors /departments where support overall has not remedied underperformance. Safeguarding, family support and mental health & well-being support. House community, student leadership and personal development and celebration.



### Heads of Department

Track and monitor students. Work with subject teachers to direct clear intervention and support. Liaise with parents, form tutor and Heads of House when students do not make progress.

### House community , Worship, PD & Coaching : All form tutors

Frequent coaching sessions with form members to review academic and pastoral data and set short term targets. This will be documented in student coaching logs and on CPOMS.

### Class Teachers and SEND team: Inceptive support

High impact strategies and support– quality first teaching and high expectations.