



ST HILDA'S
CE HIGH SCHOOL

SPECIAL TRAFFIC EDITION

Croxteth Drive, Sefton Park
Liverpool, L17 3AL
T: 0151 733 2709
F: 0151 735 0530

Dear parent and carer

As a school in a densely populated residential area, our relationship with our closest community is really important to us. Recently I have met with members of the Residents Committees and the local police to look at the growing issue of parking when dropping and picking up your sons and daughters.

During December we had a number of incidents which stemmed from discourteous and dangerous parking. On 3 separate occasions parents who spoke to other parents regarding poor and dangerous parking were verbally abused and this was in front of students!

As I open the gates at 8 and there is a staff presence until 8.25 and after school from 2.50 onwards, we have noticed and addressed some concerning traffic manoeuvres which include:

Parking/stopping on the zig zag lines leading up to a zebra crossing

Mounting the pavement to drop a student off. Some cars are centimetres away from students

Parking on the corner by the student entrance, thus blocking the view of other drivers

Parking on double yellow lines

Blocking the drives of the flats by the school. This is a particular issue at the end of the school day

Using the parking places reserved for the blocks of flats near to school

As a working mum, I appreciate the difficulty in dropping and picking up our children in a busy working day. For many of you the school drop-off and pick-up will be on the way to and from your workplace. Our working days are hectic and, if you are like me, you will be rushing from one place to another. However, our jobs as parents and as a school is to safeguard our young people.

Having discussed this with the Police and our local residents, we have the following suggestions to ensure that all our precious son/daughters/students are safe:



Cars parked/
stopped on a
busy road and
blocking in
resident cars



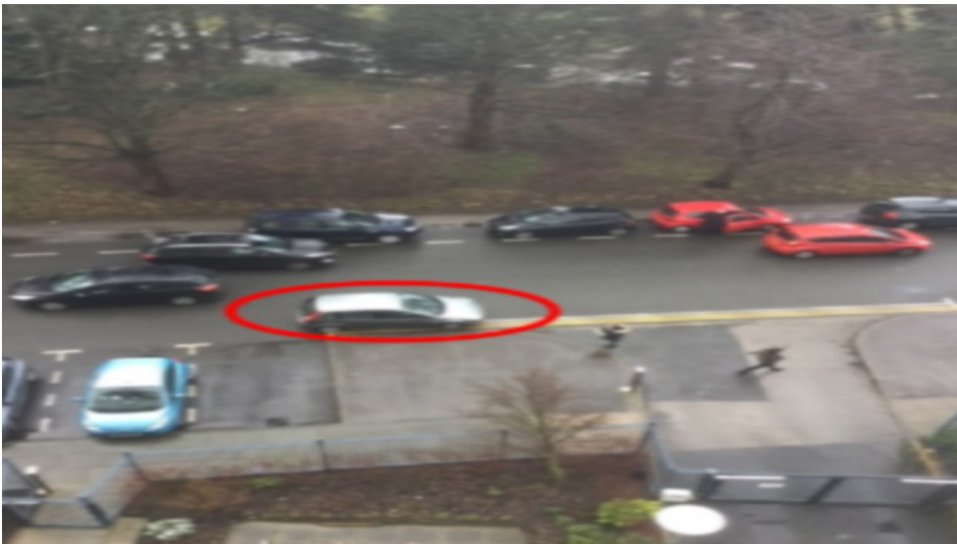
Cars parked on
double yellow lines
and blocking an
entrance to our
neighbours



More examples of
poor parking that
may endanger our
students, staff and
neighbours



Yellow lines are there to highlight where we cannot park, even for 5 minutes



Car on double yellow lines and covering a parking place for residents

We would like all parents and carers dropping off and picking up from the school to use the areas designated by the white lines to park safely and courteously. There is also a parking area to the right of the school by the roundabout. Students can walk safely from there and there is a zebra crossing in front of the school for them to use safely. We are very lucky to have so many areas where we can park safely around the school, indicated by white dotted lines. Please use these, even if it means dropping and picking up a little further away from school.



Examples of parking areas close to the school with pavements and access to a zebra crossing



Our neighbours are finding it increasingly difficult to access their flats during parents' evening and any evening events that we have due to parking across driveways and their allocated parking spaces. Can you please bear this in mind when attending any evenings and use the areas designated by white lines?

The Police will be increasing their presence during drop-off and pick-up times. This is to ensure the safety of your sons and daughters. The senior leadership team and senior pastoral team will be extra vigilant regarding potentially dangerous parking.

There is a zebra crossing, so using the drop-off points suggested in this letter should not be an issue and there are members of senior staff on duty from 8—8.25 am and from 2.50 each school day.

Let's work together to ensure that your sons and daughters are safe and our local residents are not inconvenienced in their daily lives.

I thank you for your co-operation. I am sure that we all want the same outcome.

Yours

Brian Johnson



Rob Rowlands



PC Davies



Jo Code

