

ST HILDA'S CE HIGH SCHOOL

Worship Policy

Date Policy prepared: November 2019

Governor Committee: Full Governing body

Policy agreed by committee: 17th June 2020

Date ratified by governing body: 17th June 2020

Policy reviewed by: EK/JCo

Date for next review (annual/2 yearly): Annual

St Hilda's is educating for Wisdom, Hope, Community, Dignity and Equality



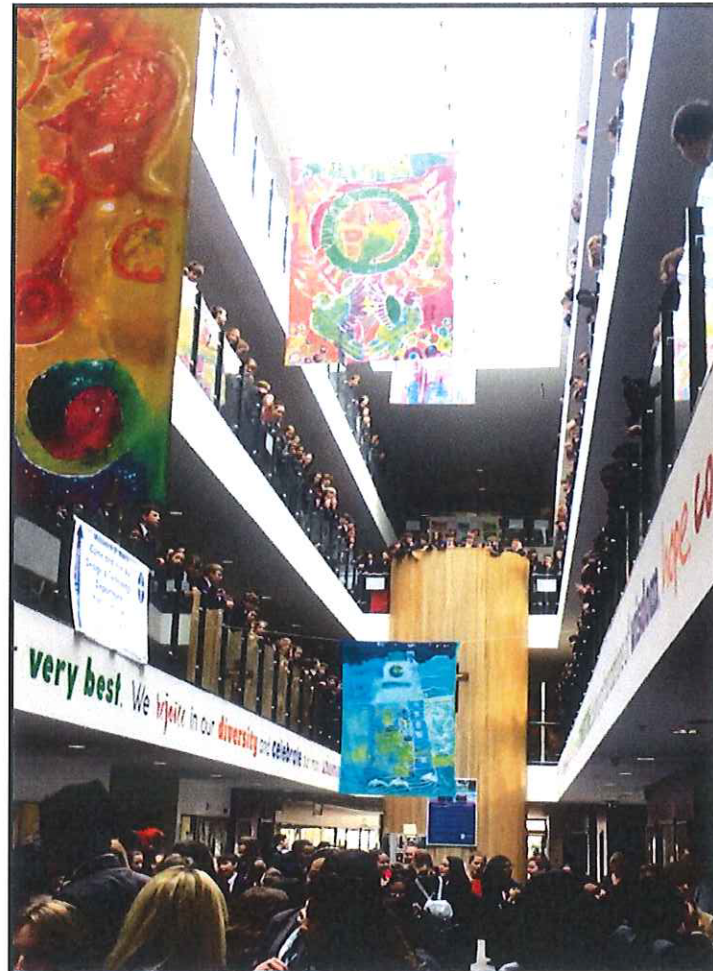
ST HILDA'S CE HIGH SCHOOL

VALUE		THE POLICY		
Wisdom	Hope	Community	Dignity	Equality
<p>We aim to honour God in everything that we do in order to develop excellent standards of performance and conduct to deliver excellence in all that we do.</p> <p>The policy is designed to reinforce our commitment to God by developing an atmosphere and opportunity for staff and students to worship God if they wish.</p> <p>We take pride in our Christian distinctiveness and acts of collective worship to support our faith.</p> <p>The guiding principal of the policy is to treat each other fairly and reasonably, with respect and courtesy at all times, no matter what the circumstances, consistent with our values.</p>				

St Hilda's is educating for Wisdom, Hope, Community, Dignity and Equality

St Hilda's CE High School

Collective Worship Policy



**We are the St Hilda's family,
with Jesus Christ as our cornerstone** (Ephesians 2:20).
**Building on foundations of
wisdom, hope, community, dignity and equality,**
we nurture and support one another
to be our very best.
We rejoice in our diversity
and celebrate our many achievements.



Worship at St Hilda's

Our faith

In accordance with the Church of England, we believe and trust in one God, Father Son and Holy Spirit. St Hilda's ethos for education is shaped by our Christian vision and one that encourages the spiritual, physical, intellectual, emotional, moral and social development of our students. As a school community, we embrace diversity and respect freedom of religion and belief, enabling all to flourish.

Our vision

We are the St Hilda's family,
with **Jesus Christ** as our **cornerstone**.

Building on foundations of
wisdom, hope, community, dignity and equality,
we nurture and support one another to be our very best.

We rejoice in our diversity
and celebrate our many achievements.

*Ephesians 2:18-20 says "God is building a home. He's using us all—irrespective of how we got here—in what he is building. He used the apostles and prophets for the foundation. Now he's using you, fitting you in brick by brick, stone by stone, with **Christ Jesus as the cornerstone** that holds all the parts together. We see it taking shape day after day—a holy temple built by God, all of us built into it, a temple in which God is quite at home."*

Our values

Our five school values: **wisdom, hope, community, dignity and equality** demonstrate our Christian character and are the standards by which we live out our collective vision as a school community. Each value is championed by one of our Houses and is linked to one of the wonderful charities that we support.

Our Prayer

Written by Grace Coltart in 2017

Dear Lord,
Thank you for our school.
Help us to work as a community,
treat each other with dignity,
grow in wisdom as we learn, show equality to all
and give us hope for the future.
In Jesus' name,
AMEN



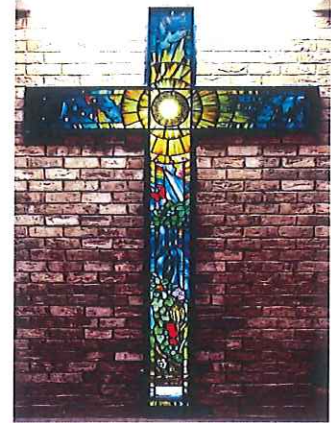
Wisdom·Hope·Community·Dignity·Equality

Defining Collective Worship

Christian worship is honouring God. It means acknowledging that God is holy and above all things: in other words, it is a loving and authentic response to the all-loving nature of God as revealed in the person and work of Jesus Christ, through the Bible, reason and the traditions of the Holy Communion.

It is not possible to force a person to worship because worship by its very nature is an act of love stemming from a personal relationship with God. In the school situation the most we can do is provide an atmosphere and opportunity which is suitable for both staff and students to worship God if they wish.

Collective worship is somewhat unique to schools and is a term only found in educational circles. Churches and other centres of faith worship in a manner that can be termed as corporate rather than collective. In a school no assumptions can be made about the shared beliefs of those who attend collective worship. The students and staff are a group of people who come from a variety of Christian and non-Christian backgrounds, some who have a faith and some who do not. We cannot make any assumptions about family backgrounds which may well (even in a Church school) vary between devout Anglican, secular humanist, atheist, Muslim or other world religion. Nor can we make assumptions about where individual students may be on their faith journey: a student from an Anglican family may well be in a very different position from that of their parents. In addition to ages and cognitive abilities of our students, collective worship must take into account the varied backgrounds of both students and staff. No assumptions should be made when planning and delivering collective worship.



In acts of Collective Worship we must be aware that people may respond in a variety of ways and at a number of different levels. There will be those who will be engaged, those who are learning through the experience and those who wish to passively observe. Some people will be on the fringes and be undecided; others will be closed to what is going on; and others will fully engage in the process. There will also be those people who wish to take an active role in leading acts of Collective worship. The task for those who plan and deliver Collective Worship must be to provide a setting where everyone present may find something positive without compromising the distinctly Christian integrity of the school.

Collective Worship should model the distinctive Christian and Anglican identity of the school. According to Canon John Hall, Church schools are the "Centre of the Church's mission." In 1998, the General Synod declared that "They (Church schools) stand at the centre of the Church's mission to the nation." Collective worship should therefore model the worship of the Church of England and where possible maintain the traditions and teaching of the Church. We should be aware that our acts of worship will impact on the lives of people who may never have encountered Christ or His church.

Legal Requirements

Collective Worship in a Church of England school is the responsibility of the Governors in consultation with the Head teacher.

- It should be carried out in accordance with the school's Christian vision and values.
- There must be an act of Collective Worship every day for all students.
- The act of worship may take place at any time of the day and in any regular school grouping e.g. Whole school, Houses, forms or key stages.

Our Aims

Worship should:

- Have a recognised place in all key school documents.
- Be well resourced, organised, planned and led.
- Be distinct from ordinary classroom activity.
- Be inclusive and unifying whilst maintaining the integrity of the Christian faith.
- Encourage student leadership.
- Be real worship.

Our Structure

Opportunities

Students and staff should have daily opportunities to worship God, explore belief, and develop community spirit. Examples of this include:

- Soul Time (Worship in Forms in the morning)
- Reflection Time (Worship in class in the afternoon)
- God-centred Weekly House Assemblies
- School Eucharist each term
- Annual Carol Services
- Occasional Services
- Staff Prayers
- Christian Union
- Retreats and pilgrimages



Leadership

Under the direction of the Head teacher in consultation with the Worship Committee, worship is organised and coordinated by the Head of Worship, School Chaplain and where appropriate, our student Worship Team. Student leadership should be encouraged and nurtured whilst maintaining accountability through the student Worship Team.

Worship Team

Student Worship Leaders have a responsibility to set an example to others and lead our school community with a clear understanding of what worship is, why and how we worship God. Many students in school have no other opportunity to experience God in their lives and as such, rely on these young worshippers to lead with wisdom and integrity.

Regular Worship Team meetings will take place throughout the school year in order to inform, plan, pray and share fellowship. All students, regardless of faith or religion are welcome to join the team, providing they uphold the vision and values of the school.

Opportunities to lead collective worship must be available for members of the team who feel confident and able.

Examples include:

- Whole-school services
- Assemblies
- Serving bread and wine during Eucharist
- Hospitality for visitors
- Form worship representatives
- Student Prayer groups



Spiritual and practical training should be provided for all team members during the school year. Yearly retreat organised for all team members to reflect on the year and plan for the year ahead.

Worship Committee

This committee should meet once per Term (or as required by the Head teacher or Head of Worship) and will comprise of the following members:

- Head teacher
- School Chaplain
- Diocesan Link Governor
- Head of Worship

The committee may invite associate staff members or Student Worship Team representatives to join meetings where the agenda is relevant.

Our Services

Christian Distinctiveness

At St Hilda's we pride ourselves on the Christian distinctiveness of our collective acts of worship.

There is a set theme for each academic year set by the Head of Worship and agreed by the Worship Committee, which all form-time worship and assemblies should follow, with additional appropriate themed services for Christmas and Easter. This provides opportunity to explore a variety of Christian topics and themes in detail e.g. characters in the Bible, sayings of Jesus, the character of God.

It is expected that those leading worship of any sort will use their wisdom and discretion to make adjustments to suit the needs of the participants. From time to time issues or events arise which may necessitate a change in the weekly theme. In these cases, those leading assemblies are encouraged to advise the Head of Worship if they wish to change the theme for assemblies.

Every effort should be made to create worship opportunities that are accessible, inclusive and suitable for all. Under certain circumstances students may be withdrawn from acts of worship following consultation with the Head.

For where two or three gather in my name, there am I with them." - Matthew 18:20

As a Form

Soul-Time: Each form will follow the set worship theme for the year and tutors should enable students to participate in the collective act of worship that is pre-prepared for each morning. The form tutor has responsibility for the delivery of Soul-Time each morning and should where possible invite students to lead this worship time.

The Soul-Time PPT contains enough material for four days, leaving room for a House assembly. Students should be encouraged to own this time as much as possible. Soul-Time material can be found in Staff Share/Worship/SoulTime. A hard copy of the School Prayer, the Lord's Prayer and the Grace are provided in every room. Teachers are encouraged to make use of these during this time of worship. From time to time observation of form prayers by Senior Leaders or Head of Worship will take place.

Reflect: At the end of period 5 a bell sounds for a five minute 'Reflection Time' for all students. Material for this can be found in StaffShare/Worship/Reflect. It is up to the discretion of the class teacher as to what material is relevant for individual classes. Any ideas/resources are welcome from staff or students.

As a House

Assemblies: These take place in Houses once a week according to a rota which is published at the start of the school year by the Head of Worship. Students should go directly to the hall to be registered and should arrive and depart from assemblies in a quiet and respectful manner. Assemblies are overseen by each Head of House and may be otherwise taken by Senior Leadership Team, or visitors.

Form groups are required to lead one assembly each school year. These dates are released at the beginning of the school year along with the topic so that form groups have ample time to prepare. Other staff or students are actively encouraged to take part in leading assemblies. Staff wishing to lead assemblies should contact the Head of Worship. House assemblies are to be Christian in content and last fifteen minutes. They should usually include a Bible reading and a prayer.



Any additional assemblies during the week should also reflect our Christian principles and incorporate a prayer or short relevant passage from scripture, read by any staff or student representative for reflection.

Christian leaders from our local and international communities are invited to lead worship at St Hilda's. This helps to strengthen connections and enriches our worship experience. New visitors will be briefed and "hosted" by the head of Worship or other member of staff. The Head of Worship will liaise with the office manager with regard to inviting visitors. Other staff wishing to invite visitors to take assemblies should liaise with the Head of Worship and Head to ensure the suitability of guests. To avoid any misunderstanding, the purpose of collective worship will be explained to new visitors in advance. In general, guests should belong to faith groups who can subscribe to Churches Together and the Anglican Communion. Communication will be sent to visitors prior to them leading worship and a note of thanks should be sent after the event. Potential visitors who feel unable to comply with the school's Anglican foundation will be politely advised that St Hilda's is not a suitable place for their ministry.

As a School

We regularly come together as a school community to encounter God, give thanks for what He has done for us and offer Him our praise, worship and ourselves for his service.

There are a variety of opportunities throughout the year to gather together as a whole. These include:

- **Whole-school Services** in the Assembly/Dance/Drama/Dining space. This takes place at the beginning or end of the school term due to the complex logistics involved. Head of Worship must confirm the booking of spaces well in advance and will liaise with Maintenance to ensure a smooth set up of the space. Music and songs are decided by Head of Worship and Head of Music.
- **Balcony Services** involve a call to worship over the tannoy and often include worship activities in form rooms, organised by the Head of Worship and student Worship Team. Musical pieces in the atrium are arranged by the Head of Music. These services are agreed between the Head teacher, Head of Worship, School Chaplain and Head of Music and organised in advance so that staff are informed of changes to the school day.
- **Year 7 Welcome Service** takes place every September. This provides our new Year 7 cohort and their families to experience the service style at St Hilda's and welcome them into the family. This service generally involves a talk based on our school vision and Biblical passage from Ephesians 2:18-22. Music and songs are decided by Head of Worship and Head of Music.
- **Chapel Services** are held as informal worship experiences for occasions such as Christingle and Ash Wednesday. These are generally very informal and relaxed, so that they are accessible for all staff and students who wish to celebrate them. This also offers an opportunity for student leaders to design and arrange the content of these services, under the supervision of the Head of Worship and/or school Chaplain.

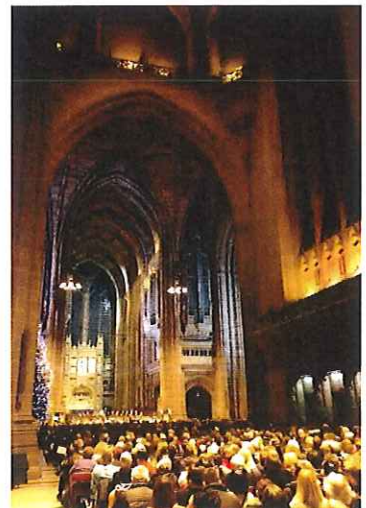
Whole school worship services should be attended by all staff and students throughout the school year. The yearly service schedule is drafted by Head of Worship with input from student Worship Team, and agreed by the Worship Committee. It is vital that the school community, in particular the students, have ownership of the services at St Hilda's. The Eucharist is generally celebrated by the Chaplain and, on occasion, visiting members of the our Christian community who are approved by the Liverpool Diocese.

The order of our services loosely follows the Anglican Common Worship which is adapted to suit the needs of our congregation. This is put together by the Head of Worship and Chaplain. The service must also include a sermon/talk which will be delivered by the chaplain, member of staff, student or visitor. The service leader is generally an enthusiastic member of the student Worship Team.

Music is provided by the Music department and the Head of Music will work closely with the Head of Worship and Chaplain in the planning and delivery of the service. Song lyrics are checked beforehand to ensure they are in line with our Christian ethos. Any liturgy sheets should be approved by the Head teacher prior to printing. The Head of Worship and Music will liaise with site and IT staff to arrange PA and AV equipment as required.

All students and staff are invited to receive Communion or a blessing; this includes those of non-Anglican denominations. Unconfirmed Anglican children may receive Communion if they normally receive Communion in their own church. Anyone may receive a blessing,

Rehearsals of hymns/songs and music for use in assembly and Eucharist should take place when needed throughout the school year. The head of Music will work closely with the head of Worship and Chaplain to ensure this takes place and details will be publicised.



Our Family

Christian Union and other groups

We recognise that there are many levels of faith, various beliefs, backgrounds and differing needs within our school community. We strive to ensure that all individuals can be involved in groups that nurture and support their spiritual development. Extra-curricular groups such as Christian Union, Youth Alpha and Staff Prayer are encouraged. Additional groups such as LGBTQ, mental health, peer mentors and other types of support groups are also encouraged as long as their aims remain in keeping with our Christian vision and values as a school community. Full permission of the Head teacher or Head of Worship must be obtained before any group wish to take assemblies or lead whole-school worship.

Currently our Chapel operates every lunch time as a hub for various activities:

Monday	Tuesday	Wednesday	Thursday	Friday
Student Prayer	Philosophy Club	Peer Mentors	Staff Prayer	Worship Team

Other Faiths

We endeavour to provide space and opportunities for students of other faiths to participate in their own acts of worship, celebration and observance of their own festivals. The Head of Worship should be consulted if any arrangements are needed in this respect of the Chapel space and every effort will be made to accommodate reasonable requests.

Our Future

Worship at St Hilda's has flourished over the past four years. This is due to the collaborative efforts of both students and staff, bringing fresh ideas, utilising gifting and unleashing creativity to inspire and encourage our ever growing community. Our Head teacher, Head of Worship, School Chaplain and student Worship Team should always be open to new ideas and willing to receive constructive suggestions from staff and students.

The way we are using our space for worship is also evolving. Use of the Chapel for prayer, worship or quiet reflection is strongly encouraged. This can be for subject classes, individuals or form groups. Anyone wishing to use the Chapel should use the online booking system and also contact the Head of Worship, to ensure the space is available and furnishings are appropriate. Respectful attitudes and behaviour are paramount when using the Chapel and Assembly spaces, regardless of the reason for meeting there. Chapel resources and furnishings must be treated with care at all times.

