



**ST HILDA'S**  
CE HIGH SCHOOL

# Uniform

price list and measuring guide  
June 2023

**Liverpool**  
**SCHOOLWEAR**

Quality  
school outfitters

298 St. Mary's Road Liverpool L19 0NQ  
T: 0151 345 3797

**REBRANDING**



For many years, we have been known locally as *Trutex at Liverpool Schoolwear*

We have rebranded as LIVERPOOL SCHOOLWEAR.

Still the same people, operating from the same shop at  
298 St. Mary's Road,  
Liverpool L19 0NQ

We hope that this rebranding will avoid misunderstandings, such as assuming that we are connected with other shops with a similar name, or confusing us with the manufacturing company Trutex, who remain one of our suppliers.



298 St. Mary's Road Liverpool L19 0NQ T: 0151 345 3797  
E: [orders.lpool.schoolwear@gmail.com](mailto:orders.lpool.schoolwear@gmail.com) W: [www.liverpoolschoolwear.co.uk](http://www.liverpoolschoolwear.co.uk)



## Contents

Page 4	Important information on how to get your St. Hilda's uniform, by calling at our store or via email.
Page 5	Prices for all day to day uniform.
Page 6	Prices for P E kit. Sixth Form College jackets and ties. Directions and a map of where we are. Viewed on most devices click on the map for directions from St. Hilda's to our shop.
Pages 7 to 11	St. Hilda's C E High School uniform sizing guides.
Page 12	Order form. Can be used to send your order. Alternatively, if you find it easier to type your order in an email, you can use the form as a check list.

**Click here FOR ST. HILDA'S HOUSE COLOURS**

---

All items of uniform should be identified with name labels. P E kit may be embroidered with student's initials in the correct House colour, if desired. Please enquire in store.

---

### Liverpool Schoolwear



298 St. Mary's Road  
Aigburth Road  
Cressington  
Liverpool L19 0NQ  
T: 0151 345 3797

E: [orders.lpool.schoolwear@gmail.com](mailto:orders.lpool.schoolwear@gmail.com)

## Liverpool Schoolwear

298 St. Mary's Road Cressington  
Liverpool L19 0NQ

T: 0151 345 3797

E: [info@liverpoolschoolwear.co.uk](mailto:info@liverpoolschoolwear.co.uk)

ORDERING: [orders.lpool.schoolwear@gmail.com](mailto:orders.lpool.schoolwear@gmail.com)



The majority of people prefer to visit our local independent shop with their children, where they can try on their uniform. This is especially true for those who are attending school for the first time. Our knowledgeable staff are here to guide you through the process; advising on issues such as sizing and which items are optional or compulsory.

If you wish to order by email, but are uncertain of your sizes, please use our **sizing guides** to help complete your order form as accurately as possible.

Alongside standard label sizes, our guides state approximate measurements of garments when laid flat. Measuring your child's current garment, across the middle and from top to bottom, will hopefully remove some of the guess work.

Standard manufacturers sizing charts are available for trousers.

If you prefer not to use the order form, **simply type your order directly into an email** and send it to:

[orders.lpool.schoolwear@gmail.com](mailto:orders.lpool.schoolwear@gmail.com)

***Important: Please include your mobile telephone number with your order.***

We will check your order, then contact you to allocate an order number and confirm the the total cost. At this point card payments will be accepted over the phone. Further contact, usually by text message, will be made when your order is ready for collection.

For updates, including opening times.

CLICK HERE ► [www.liverpoolschoolwear.co.uk](http://www.liverpoolschoolwear.co.uk)



# St. Hilda's High School Uniform Price List 2023

To avoid  
risk of  
disappointment  
please order  
early

Blazer:	Blazer, badged and braided.	chest 28" - 36"	36.00
	<b>New style only on sale from May 2023.</b>	38" - 50"	41.00
Skirt:	Single pleat skirt.	waist up to 28"	17.00
		30" - 38"	20.00
	Liverpool Schoolwear single pleat skirt.	waist up to 28"	20.00
		30" - 36"	22.00
Trousers:	GIRLS D L Black trousers.	waist up to 28"	16.00
	as specified by St. Hilda's	over 28"	18.50
	BOYS black trousers.	waist up to 28"	16.00
		29" - 50"	20.00
	Trutex classic fit and sturdy fit trousers up to age 13		only 12.00
Knitwear:	Superior quality cotton blend knitted pullover.		
	Sizes up to 38"		19.00
	40" to 48"		24.00
	Superior quality cotton blend knitted cardigan.		
	Sizes up to 38"		20.00
	40" to 48"		25.00
Blouses:	Trutex <b>twin pack</b> . Button up (for tie) Long or short sleeves	22" - 34"	14.50
		36" - 46"	16.50
Shirts:	Trutex, <b>twin pack</b> . Long or short sleeves.	11" - 14"	14.50
		14 <sup>1/2</sup> " - 19"	16.50
Tie:	Official St. Hilda's tie (clip on) all house colours		7.00
Socks:	Knee high <b>2 pack</b> .	up to 4/7	5.50
	Ankle <b>5 pack</b> .	up to 4/7	7.00
		7/11	6.50
		7/11	8.00
Scarf:	Official St. Hilda's woven scarf.	long style.	13.00
Aprons:	White or Navy.		6.00
Lab coat:	White.	from 14.00	to 18.00
Name labels	Iron on/stitch on fabric. Printed with name	25	4.50
		50	6.00
Hair ribbon:	per foot		50p

Feel the  
difference!

Sportswear and accessories on next page ▼

## Liverpool Schoolwear



SA THE SCHOOLWEAR ASSOCIATION

298 St. Mary's Road  
Aigburth Road  
Cressington  
Liverpool L19 0NQ  
T: 0151 345 3797

E: [orders.lpool.schoolwear@gmail.com](mailto:orders.lpool.schoolwear@gmail.com)

All prices correct at the time of printing June 2023 E&OE

All St. Hilda's uniform and P E kit from Liverpool Schoolwear 298 St. Mary's Road Liverpool L19 0NQ



# St. Hilda's High School

## P E kit 2023



Games shirt:	Unisex, sports shirt.	26/28 30/32 34/36"	15.00
		36/38 40/42 44/46 48/50 54/56"	18.00
Rugby Shirt:	Fully reversible	up to XS	20.00
		S and above	24.00
Shorts:	Navy	XXS - XS waist 24/26" - 26/28"	6.00
		S - XXXL 28/30" - 44/46"	7.00
Leggings:	St. Hilda's leggings	22/24" 24/26" 26/28"	19.00
		28/30" 30/32" 32/34" 36/38" 40/42"	22.00
Sweatshirt (Girls):	with St. Hilda's logo	All sizes	17.00
Track pants:	Cuffed with ¼ zip	9/10 11/12	15.00
(optional)		28/30" 30/32" 34/36" 38 40" 42/44"	17.00
Games socks:	Purple pro sports socks.	All sizes	7.00
Monogramming:	Initials embroidered in house colour, on PE kit, (per item)		2.50
Gum shield:	Clear or colours		4.00
Shin pads:		Youth 6.00 Adult 9.00	
Shin/ankle guards:			14.00



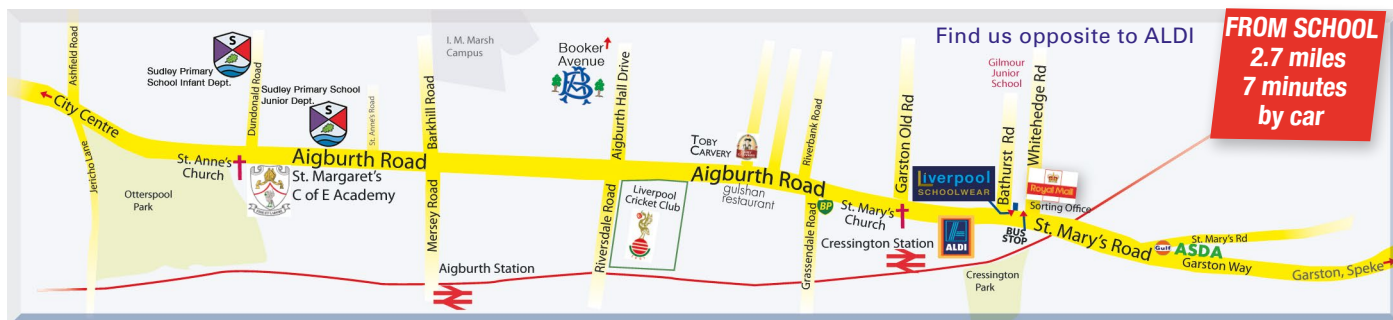
## St. Hilda's SIXTH FORM College

**ST HILDA'S**  
COLLEGE

Jacket:	Badged	chest 28" - 36"	33.00
		38" - 50"	35.00
Tie:	Official St. Hilda's VI tie		7.00



**Public Transport:** Travelling from the direction of Liverpool City Centre, towards Speke. 82 and 82a buses stop virtually outside our shop and opposite, if travelling towards the City. Frequency on week days is around every ten minutes. Cressington Railway Station is within five minutes walk. Trains arrive at fifteen minute intervals. **For your quickest route to us using google maps, click the map below.**



**Opening:** Hours of opening vary during the year. For up to date information on hours of opening, please visit: [www.liverpoolschoolwear.co.uk](http://www.liverpoolschoolwear.co.uk) **CLICK HERE**

298 St. Mary's Road continuation of Aigburth Road Cressington Liverpool L19 0NQ  
**T:** 0151 345 3797 **E:** [info@liverpoolschoolwear.co.uk](mailto:info@liverpoolschoolwear.co.uk)  
[www.liverpoolschoolwear.co.uk](http://www.liverpoolschoolwear.co.uk) **@TrutexLiverpool**

# St. Hilda's C E High School Blazers

## Measuring guide (inches) laid flat



**From September 2023 OLD STYLE St. Hilda's blazers with braided pockets will be OBSOLETE. All students should wear blazer with corded collar, which was introduced in April 2022.**

### GIRL'S BLAZER

CHEST	WIDTH	LENGTH
28"	14½"	24"
30"	15½"	26"
32"	16½"	27"
34"	18"	28½"
36"	18½"	30"
38"	19"	31½"
40"	20½"	31½"
42"	21½"	31½"
44"	23"	32"

### BOY'S BLAZER

CHEST	WIDTH	LENGTH
28"	16"	24"
30"	17"	26"
32"	18"	27"
34"	19"	29"
36"	21"	31"
38"	22"	33"
40"	22½"	33½"
42"	23"	34"
44"	24"	34"

## Shirts and blouses

Shirts for boys are measured by collar size Blouses for girls are measured in chest sizes. Available sizes are shown below. All sizes are in inches. For guidance on the best way to measure, your child for blouses and shirts, please click the image below.

Shirts and blouses are non returnable, once opened or tried on.

[We have sample garments to try on in store.](#)



### Blouse CHEST Sizes

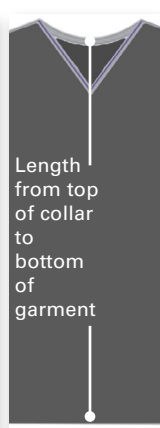
26"	38"
28"	40"
30"	42"
32"	44"
34"	46"
36"	48"

### Shirt COLLAR sizes

11"	15½"
11½"	16"
12"	16½"
12½"	17"
13"	17½"
13½"	18"
14"	18½"
14½"	19"
15"	

All measurements on this page are approximate. Some variation may occur, due to production tolerances.

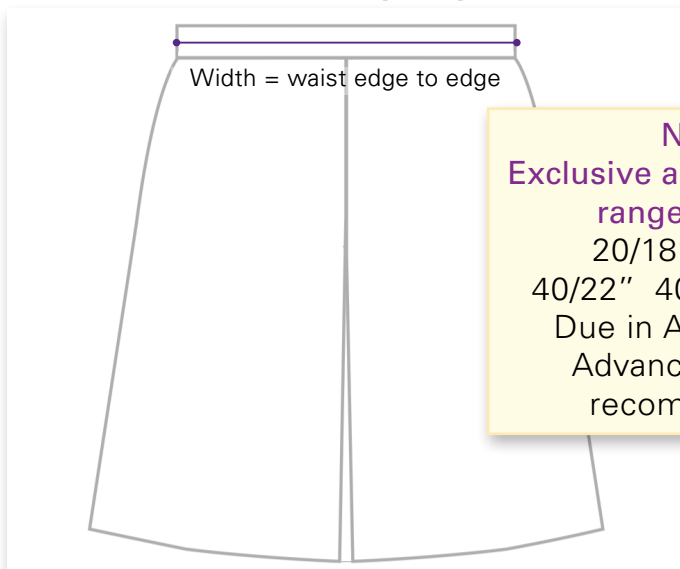
# St. Hilda's C E High School knitwear Measuring guide (inches) when laid flat



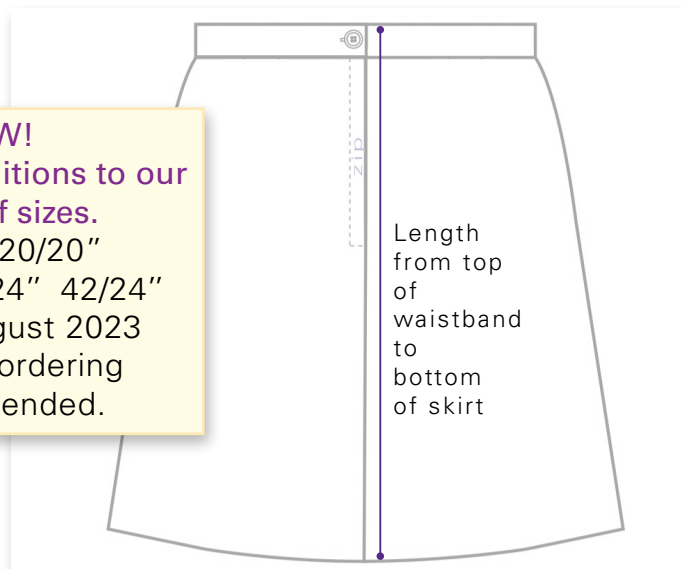
CHEST	WIDTH	LENGTH
28"	15"	21"
30"	16 ½"	22 ½"
32"	18"	24 ¾"
34"	19 ½"	26"
36"	20 ½"	26 ¾"
38"	21 ½"	27 ¼"
40"	22"	27 ½"

The dimensions of pullovers and cardigans are exactly the same.

# St. Hilda's C E High School Skirt Measuring guide (inches) when laid flat



**NEW!**  
Exclusive additions to our  
range of sizes.  
20/18" 20/20"  
40/22" 40/24" 42/24"  
Due in August 2023  
Advance ordering  
recommended.



Waist/Length	WIDTH	LENGTH
22/18"	12"	18"
22/20"	12"	20"
24/18"	13"	18"
24/20"	13"	20"
24/22"	13"	22"
26/18"	14"	18"
26/20"	14"	20"
26/22"	14"	22"
28/18"	15"	18"
28/20"	15"	20"
28/22"	15"	22"
28/24"	15"	24"
30/18"	16"	18"
30/20"	16"	20"

Waist/Length	WIDTH	LENGTH
30/22"	16"	22"
30/24"	16"	24"
32/18"	17"	18"
32/20"	17"	20"
32/22"	17"	22"
32/24"	17"	24"
34/18"	18"	18"
34/20"	18"	20"
34/22"	18"	22"
34/24"	18"	24"
36/22"	19"	22"
36/24"	19"	24"
38/22"	20"	22"
38/24"	20"	24"

All measurements on this page are approximate. Some variation may occur, due to production tolerances.

# Boy's and men's trousers

## Sizing guide (inches)

### Senior trousers

#### CONTEMPORARY (code TPT)

##### & SLIM LEG (code TLT)

SIZE	WAIST	INSIDE LEG
26"	26"	27"
28" S	28"	27"
28" R	28"	29"
28" L	28"	31"
30" S	30"	30"
30" R	30"	32"
30" L	30"	34"
32" S	32"	30"
32" R	32"	32"
32" L	32"	34"
34" S	34"	30"
34" R	34"	32"
34" L	34"	34"
36" R	36"	32"
38" R	38"	32"
40" R	40"	32"
42"	42"	*35"
44"	44"	*35"
46"	46"	*35"
48"	48"	*35"
50"	50"	*35"

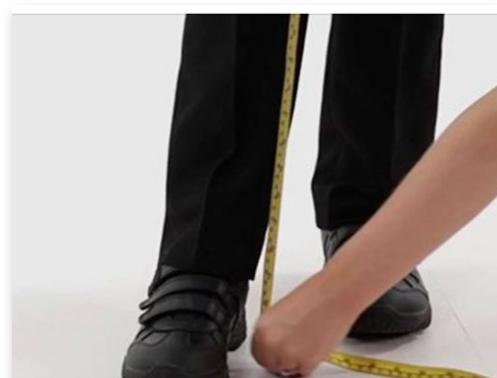
\* unfinished hem



You can find guidance on taking measurements for trousers and other garments on our Facebook page [TrutexLiverpoolSchoolwear](#) by clicking the image on the right. ►

#### STURDY FIT (code TSF)

SIZE	WAIST	INSIDE LEG
26"	26"	21"
28"	28"	25"
30"	30"	27"
32"	32"	28"
34"	34"	28"
36"	36"	29"
38"	38"	29"
40"	40"	29"
42"	42"	32"
44"	44"	32"
46"	46"	32"
48"	48"	32"
50"	50"	32"



### Junior trousers

#### SLIM FIT (code SFJ)

AGE	WAIST	INSIDE LEG
4 years	19"	17"
5 years	20"	18"
6 years	21"	19"
7 years	22"	21"
8 years	23"	22½"
9 years	24"	24"
10 years	25"	25"
11 years	26"	26½"
12 years	27"	28"
13 years	28"	29"

#### CLASSIC (code CFJ)

AGE	WAIST	INSIDE LEG
2 years	19"	15"
3 years	20"	16"
4 years	21"	17"
5 years	22"	18"
6 years	23"	19"
7 years	24"	21"
8 years	25"	22½"
9 years	26"	24"
10 years	27"	25"
11 years	28"	26½"
12 years	29"	28"
13 years	28"	29"

#### STURDY (code STJ)

AGE	WAIST	INSIDE LEG
4 years	23"	17"
5 years	24"	18"
6 years	25"	19"
7 years	26"	21"
8 years	27"	22½"
9 years	28"	24"
10 years	29"	25"
11 years	30"	26½"
12 years	31"	28"
13 years	32"	29"

# St. Hilda's C E High School P E shirt

## Measuring guide (inches) laid flat



### St. Hilda's P E shirt

Specially designed by us and unique to St. Hilda's. This breathable sports shirt features reflective strips and St. Hilda's badge.

CHEST	WIDTH	LENGTH
26/28"	14½"	21"
30/32"	16"	23"
32/34"	18"	24½"
34/36"	19"	26"
36/38"	20"	27½"

CHEST	WIDTH	LENGTH
38/40"	21½"	29"
42/44"	23"	30"
46/48"	25"	30"
50/52"	26½"	31"
54/56"	32"	32"

# St. Hilda's C E High School P E shirt

### Shorts:

All sizes of shorts have elasticated waist with a drawstring.



### WAIST SIZE

22/24"  
26/28"  
30/32"  
36/36"  
38/40"  
42/44"



### New Leggings:

Quick dry fabric.  
Deeper elasticated waistband.

### WAIST SIZE

22/24"  
24/26"  
26/28"  
28/30"  
30/32"  
32/34"  
36/38"  
38/40"  
40/42"

### Track pants:

All sizes of track pants have elasticated waist with a drawstring.

**NEW**  
reflective detail and  
modern tapered fit



### WAIST SIZE

Age 9/10  
28/30"  
30/32"  
34/36"  
38/40"  
42/44"  
44/46"

All measurements on this page are approximate. Some variation may occur, due to production tolerances.

All items of uniform should be identified with name labels. Although not compulsory, P E kit may be embroidered with student's initials in the correct House colour. Please enquire in store.

# St. Hilda's C E High School

## Rugby shirt

Measuring guide (inches) laid flat



**St. Hilda's rugby shirt** Specially designed by us for St. Hilda's. Durable, double skinned and fully reversible. Badge on the purple side only.

CHEST	WIDTH	LENGTH
30/32"	17"	26"
34/36"	19"	28"
38/40"	21"	30"

CHEST	WIDTH	LENGTH
42/44"	23"	31"
46/48"	25"	32"
50/52"	26"	34"

# St. Hilda's C E High School

## Sweatshirt



CHEST	WIDTH	LENGTH
11/12 32"	18½"	23½"
13 34"	19"	24"
S 36/38"	21"	26"

CHEST	WIDTH	LENGTH
M 40/42"	22½"	27½"
L 44"	24"	28½"
XL 46"	26"	30"

All measurements on this page are approximate. Some variation may occur, due to production tolerances.

All items of uniform should be identified with name labels. Although not compulsory, **P E kit may be embroidered with student's initials in the correct House colour.** Please enquire in store.

## St. Hilda's CE High School - Uniform Order

Please print and complete this form. Scan or snap on your phone and email.  
Alternatively, simply type a list of your requirements, size, quantity etc., directly into an email by CLICKING HERE ► [orders.lpool.schoolwear@gmail.com](mailto:orders.lpool.schoolwear@gmail.com)

Pupil				Date	
Parent/Guardian				School House	
Email			Mobile		
Blazer (Girl)	Size	Qty	Blazer (Boy)	Size	Qty
Pullover	Size	Qty	Cardigan	Size	Qty
Skirt	Size	Waist	Length		Qty
Trousers code	Size	Waist	Length		Qty
Blouse Long sleeve	Chest size	Qty			
Blouse Short sleeve	Chest size	Qty			
Shirt Long sleeve	Collar size	Qty			
Shirt Short sleeve	Collar size	Qty			
Tie House colour			Qty		
Apron white	Qty	Apron natural		Qty	
Lab coat	Size	Qty	Name labels		Qty

### SPORTS KIT

P E Shirt	Size	Qty	Leggings	Size	Qty
Shorts	Size	Qty	Rugby shirt	Size	Qty
Sweatshirt	Size	Qty	Trackpants	Size	Qty
Sport socks	Size	Qty			
Embroidery initials	Qty	Gum shield		Qty	
Shin pads	Size	Qty	Shin/ankle pads	Size	Qty

**Liverpool Schoolwear**

**298 St. Mary's Road, (continuation of Aigburth Road) opposite ALDI, Liverpool L19 0NQ  
0151 345 3797**